



## FIRE HYDRANTS



MADE IN GNOSJÖ, SWEDEN  
**FIRE HYDRANTS**





The Presto production unit manufactures fire hydrants and is located in the industrial centre of Gnosjö in Småland. Our fire hydrants are developed on premise and most components are supplied by local subcontractors. Quick and efficient transport provides not only for short lead times, but also lower environmental impact.

The region is known for its so-called 'Gnosjö spirit', which has made Gnosjö an obvious successful business area, especially where our highly regarded and well-known fire hydrants are concerned.

Fire hydrants are usually found in hotels, warehouses and offices, as well as in schools, hospitals, public facilities, garages and industrial sites. Quite simply, wherever there is a risk of an A-type fire and an abundance of extinguishant is required.

Thanks to Presto's impressive variety of fire hydrant designs, there are no limits on adaptations to extinguishing solutions for different environments and needs. Starting from the hose reel, the fire hydrant can be customised and built in a way that best suits our customers.

---

All Presto fire hydrants bear a CE marking\* to confirm that they meet the requirements of the Swedish Construction Product Regulation No. 305/2011. They are also tested and certified according to the European Fire Hydrant Standard, EN 671-1:2012.

\*refers to hose dimensions 19, 25 mm up to a hose length of 30 meters.

# FIRE HYDRANTS

## FIRE HYDRANT TYPE 1

Fire hydrant type 1 – a centre hose reel is the basis for all our fire hydrants. Water is supplied through the centre of the hose reel, and as such only the required hose length needs to be pulled out when the fire hydrant is used. For wall mounting.

## FIRE HYDRANT TYPE 1 WITH STABILO® HOSE

The hose reel comes complete with a hose guide, ball valve and flag sign.

Item no.	Type	Hose length/dimension	Reel diameter x protrusion	RSK no.
100773	Compact	10 m/19 mm (¾")	420 x 180 mm	-
100657	1/160	25 m/19 mm (¾")	585 x 160 mm	4227250
100663	1/175	30 m/19 mm (¾")	585 x 175 mm	4227251
100674	1/200	25 m/25 mm (1")	585 x 200 mm	4227252
100678	1/240	30 m/25 mm (1")	585 x 240 mm	4227253



## Fire hydrant type 1A with STABILO® hose and automatic valve opening

The hose reel comes complete with a hose guide and ball valve.

Item no.	Type	Hose length/dimension	Reel diameter x protrusion	RSK no.
100658	1A/160	25 m/19 mm (¾")	585 x 185 mm	-
100664	1A/175	30 m/19 mm (¾")	585 x 200 mm	-
103376	1A/200	25 m/25 mm (1")	585 x 225 mm	-
100679	1A/240	30 m/25 mm (1")	585 x 265 mm	-



Jet nozzle cabinet  
(see Accessories)



## SPOOL HOSE REEL, TYPE 10 – with lightweight rubber hose

For daily use. Water is supplied through the centre of the hose reel, and as such only the required hose length needs to be pulled out when used. For wall mounting. Supplied with handle for rewinding. The hose reel is delivered complete with hose guide and ball valve.

Item no.	Type	Hose length/dimension	Reel diameter x protrusion
103163	10/175	25 m/19 mm (¾")	585 x 175 mm
104733	10/175	30 m/19 mm (¾")	585 x 175 mm
103164	10/240	25 m/25 mm (1")	585 x 240 mm
104242	10/240	30 m/25 mm (1")	585 x 240 mm





### TYPE 2 HOSE REEL WITH STABILO® HOSE – for wall mounting

The type 2 hose reel is mounted on a sturdy bracket for wall mounting. The hose can be pulled out to the desired length and then easily wound using a crank. The hose reel is used in environments where longer hose lengths are required, e.g. in industrial sites, warehouses and sports facilities. Available in varying lengths and hose selections. Hose lengths up to 100 m.

Item no.	Type	Hose length/dimension	Dimension of cabinet b x h x protrusion
100683	2/500	50 m/19 mm (¾")	500 x 585 x 610 mm
100684	2/500	60 m/19 mm (¾")	500 x 585 x 610 mm
101774	2/500	70 m/19 mm (¾")	500 x 585 x 610 mm
100687	2/500	50 m/25 mm (1")	500 x 585 x 610 mm
100689	2/600	60 m/25 mm (1")	600 x 585 x 610 mm
100688	2/600	70 m/25 mm (1")	600 x 585 x 610 mm



### TYPE 5 HOSE TENDER WITH STABILO® HOSE

The hose cart is equipped with stable wheels and powerful driving handles making it also suitable for outdoor use. It has been designed so that it can be handled by a single individual. The hose cart is suitable for use in repair and maintenance work, as well as for irrigation and flushing purposes. Available in varying lengths and hose selections. Hose lengths up to 100 m.

Item no.	Type	Hose length/dimension	Dimension of cabinet b x h x protrusion
101844	5/500	50 m/19 mm (¾")	700 x 1,000 x 850 mm
101848	5/500	60 m/19 mm (¾")	700 x 1,000 x 850 mm
101849	5/600	70 m/19 mm (¾")	700 x 1,000 x 850 mm
101820	5/500	50 m/25 mm (1")	700 x 1,000 x 850 mm
101821	5/600	60 m/25 mm (1")	700 x 1,000 x 850 mm
101776	5/600	70 m/25 mm (1")	700 x 1,000 x 850 mm



### COMPACT HOSE REEL

For mounting in installations with a limited water supply. The advantage with the hose reel is that the discharge in the centre of the reel allows for a speedy response in the event of a fire. Centre hub and brass jet nozzle. The hose reel comes complete with a hose guide, ball valve and sign.

Item no.	Type	Hose length/ dimension	Reel diameter x protrusion	RSK no.
100842	Compact	25 m/ 12.5 mm (½")	420 x 180 mm	4227249

# FIRE HYDRANTS



## TYPE 3 FIRE HYDRANT WITH STABILO® HOSE, for surface mounting

The type 3 fire hydrant comes as a complete unit consisting of a cabinet and hose reel ready for surface mounting. Supplied with ball valve and signs. The cabinet comes with a right-hinged or left-hinged door. Right-hinged door in standard design.

Item no.	Type	Hose length/ dimension	Dimension of cabinet b x h x protrusion	RSK no.
102306	3/190	10 m/19 mm (¾")	550 x 550 x 190 mm	-
100691	3/135	25 m/19 mm (¾")	690 x 690 x 135 mm	4227260
100700	3S/135	25 m/19 mm (¾")	790 x 790 x 135 mm	4227322
100763	3S/135	30 m/19 mm (¾")	790 x 790 x 135 mm	4227264
100695	3/190	30 m/19 mm (¾")	690 x 690 x 190 mm	4227261
100709	3/190	25 m/25 mm (1")	690 x 690 x 190 mm	4227262
101700	3S/190	25 m/25 mm (1")	790 x 790 x 190 mm	-
100721	3S/190	30 m/25 mm (1")	790 x 790 x 190 mm	4227351
100717	3/240	30 m/25 mm (1")	690 x 690 x 240 mm	4227263



## TYPE 3i FIRE HYDRANT CABINET STABILO® HOSE, for surface mounting

By default, the type 3i fire hydrant is intended for unheated sub-roof spaces. The cabinet is insulated with self-extinguishing material and has an insulated extra door mounted outside the front of the cabinet. Heating is via a thermostatically controlled electrical heater providing a minimum temperature of +5°C inside the cabinet. Frost-proof down to -35°C (in still air). The fire hydrant is suitable for cold storage, unheated garages and storage areas. They can also be delivered in stainless steel for corrosive environments such as tunnels, car parks, etc. Supplied with a ball valve and signs. The cabinet comes with a right-hinged or left-hinged door. Right-hinged door in standard design.

Item no.	Type	Hose length/ dimension	Dimension of cabinet b x h x protrusion	RSK no.
100726	3i/260	25 m/19 mm (¾")	690 x 690 x 260 mm	4227276
100729	3i/260	30 m/19 mm (¾")	690 x 690 x 260 mm	4227319
100733	3i/260	25 m/25 mm (1")	690 x 690 x 260 mm	4227277
100715	3i/260	30 m/25 mm (1")	690 x 690 x 260 mm	4227320



## TYPE 3N FIRE HYDRANT, REPLACEMENT FIRE HYDRANT

### For surface mounting, partially recessed in wall

The type 3N fire hydrant is a recessed fire hydrant cabinet that replaces the old type of fire hydrants with a non-rigid, folded flat hose. In order to achieve modern fire protection, the old recessed hose cabinet with hose rack should be disassembled and replaced with a recessed fire hydrant. Comes complete with sign. The cabinet comes with a right-hinged or left-hinged door. Right-hinged door in standard design.

Item no.	Type	Hose length/ dimension	Dimension of cabinet b x h x protrusion	RSK no.
100739	3N/50	25 m/19 mm (¾")	690 x 790 x 50 mm	4227280
100744	3N/50	25 m/25 mm (1")	690 x 790 x 50 mm	4227281

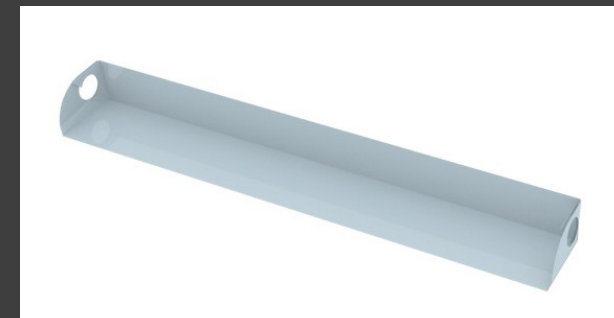
## TYPE 4SVS FIRE HYDRANT

For recessed wall mounting. With waterproofing.

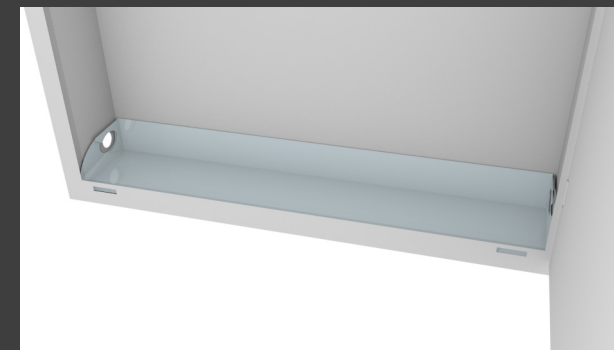
Presto Type 4SVS Fire Hydrant Cabinet with centre hose reel for recessed wall mounting. The 4SVS consists of a unique liner mounted at the bottom of the cabinet creating a waterproof layer. There are two drain holes at the front of the cabinet and the frame. This allows for quick detection of any leaking water, minimising the risk of water damage.

Based on Presto's proven 4S series (fire hydrants for recessed mounting), the 4SVS series has the same dimensions and features as before, but several items have been modified to minimise the risk of water damage.

Comes complete with factory-mounted insert, ball valve and signs. The cabinet comes with a right-hinged or left-hinged door. Right-hinged door in standard design.



The unique, type-approved liner is mounted at the bottom of the cabinet to create a waterproofed layer.



There are drainage holes at the front of the frame and cabinet that allow water from a leakage to flow out onto the front and is therefore detected more quickly.

Item no.	Type	Hose length/dimension	Dim. of cabinet b x h x depth	Built-in depth
103733	4SVS/110	25 m/19 mm (¾")	790 × 790 × 135 mm	110 mm
103737	4SVS/110	30 m/19 mm (¾")	790 × 790 × 135 mm	110 mm
103742	4SVS/160	25 m/25 mm (1")	790 × 790 × 190 mm	160 mm
103745	4SVS/160	30 m/25 mm (1")	790 × 790 × 190 mm	160 mm

# FIRE HYDRANTS



## TYPE 4 FIRE HYDRANT

For recessed mounting on wall. With STABILO® hose.

Type 4 Fire hydrant and cabinet with centre hose reel for recessed wall mounting. Comes complete with ball valve and signs. The cabinet comes with a right-hinged or left-hinged door. Right-hinged door in standard design.

Item no.	Type	Hose length/dimension	Dim. of cabinet b x h x depth	Built-in depth	RSK no.
100793	4S/75	25 m/19 mm (¾")	790 × 790 × 135 mm	75 mm	4227338
100794	4S/75	30 m/19 mm (¾")	790 × 790 × 135 mm	75 mm	4227339
100777	4/75	25 m/19 mm (¾")	690 × 690 × 135 mm	75 mm	4227337
100781	4/110	25 m/19 mm (¾")	690 × 690 × 135 mm	110 mm	4227270
100784	4S/110	25 m/19 mm (¾")	790 × 790 × 135 mm	110 mm	4227268
100789	4S/110	30 m/19 mm (¾")	790 × 790 × 135 mm	110 mm	4227269
100774	4/160	25 m/19 mm (¾")	690 × 690 × 190 mm	160 mm	4227272
100775	4/160	30 m/19 mm (¾")	690 × 690 × 190 mm	160 mm	4227273
100797	4/160	25 m/25 mm (1")	690 × 690 × 190 mm	160 mm	4227274
100800	4S/160	30 m/25 mm (1")	790 × 790 × 190 mm	160 mm	4227350
100799	4/210	30 m/25 mm (1")	690 × 690 × 240 mm	210 mm	4227340



An inset box of aluzinc plating covers the sub-assemblies of the cabinet.

## TYPE 4SEI60 FIRE HYDRANT

For recessed mounting. With STABILO® hose.

Type 4SEI60 fire hydrant and cabinet with centre hose reel for recessed mounting on wall with fire class EI60. The cabinet comes with an additional inset box of aluzinc sheet metal equipped with insulation so as not to break the fire class of the wall structure. Comes complete with ball valve and signs. The cabinet comes with a right-hinged or left-hinged door. Right-hinged door in standard design.

Item no.	Type	Hose length/dimension	Dimension of cabinet b x h x enclosure	RSK no.
100802	4SEI60/150	25 m/19 mm (¾")	830 × 830 × 150 mm	4227278
100805	4SEI60/150	30 m/19 mm (¾")	830 × 830 × 150 mm	4227279





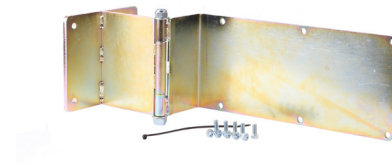
## TYPE 4G FIRE HYDRANT

### Gable fire hydrants with STABILO® hose

Gable fire hydrant for spaces with limited wall space. Suitable for shopping malls, stores, etc. where a maximum exposure area for products is prioritised. The cabinet comes with a right-hinged or left-hinged door. Right-hinged door in standard design.

Item no.	Type	Hose length/dimension	Dimension of cabinet b x h x enclosure	RSK no.
104027	4G/695	25 m/19 mm (¾")	195 x 795 x 695 mm	-
101794	4G/695	30 m/19 mm (¾")	195 x 795 x 695 mm	4227289
104017	4G/695	25 m/25 mm (1")	260 x 795 x 695 mm	-
104018	4G/695	30 m/25 mm (1")	260 x 795 x 695 mm	-

# ACCESSORIES



Swivel wall mount,  
Fire hydrant Type 1 and 10

*Item no. 101085*

Also available in stainless steel, SS 2333:

*Item no. 101086*



Protective cabinet for jet nozzle

Available in RAL 3020 red and RAL 9010 white.

*Item no. 100991 (red)*

*Item no. 100992 (white)*

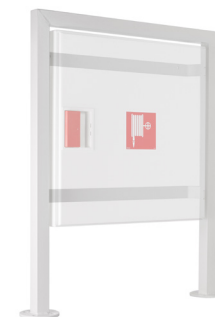


Base for fire hydrant cabinet 3/240

Supplied as standard in RAL 9010 white.  
Available in different heights.

*Item no. 101129 (300 mm)*

*Item no. 102210 (600 mm)*



Floor stand for Fire hydrant Type 3

For stand-alone cabinet assembly. Supplied as  
standard in RAL 9010 white.

*Item no. 100994 (Type 3)*

*Item no. 100995 (Type 3S)*



Foldable magnetic handle for winding up

*Item no. 103829*



Handle for winding up

*Item no. 101183 (Fixed)*

*Item no. 102577 (Foldable)*



Fixed magnetic handle for winding up

*Item no. 103828*



# CUSTOMISED SOLUTIONS

EXCLUSIVE AND COLOUR-ADAPTED FIRE HYDRANTS



With Presto's broad range of products, it is possible to choose the right fire hydrant for every need. With our own manufacturing processes, we are able to develop custom fire hydrants with respect to design and colour.



## EXCLUSIVE DESIGN

If you are looking for a more exclusive and modern design, there is the 4S/170 type fire hydrant cabinet with a door made of brushed steel and a stainless steel frame. The door window is made of PET plastic. Fits perfectly in premises where design is especially important.



## COLOUR MATCHING ACCORDING TO YOUR REQUIREMENTS

Fire hydrant cabinets come as standard in RAL 9010 white, but are also available in other colours to better fit your premises or to stand out in the event of a fire. Common colours that can be used from the RAL colour scale include, for example, RAL 3020 red, RAL 7024 grey and RAL 1016 signal yellow.



## A WIDE RANGE OF JET NOZZLES

Our range of products contains a variety of different types and sizes of jet nozzles to suit different standards, requirements and wishes. Examples of this are extended variants, dog couplings, unit jet nozzles, marine-approved jet nozzles and different variants of Handifighter.



## COMBINED CABINETS

Fire hydrant cabinets with additional space for hand fire extinguishers suitable for spaces where you would like to store two extinguishers in the same cabinet in a convenient and accessible manner.

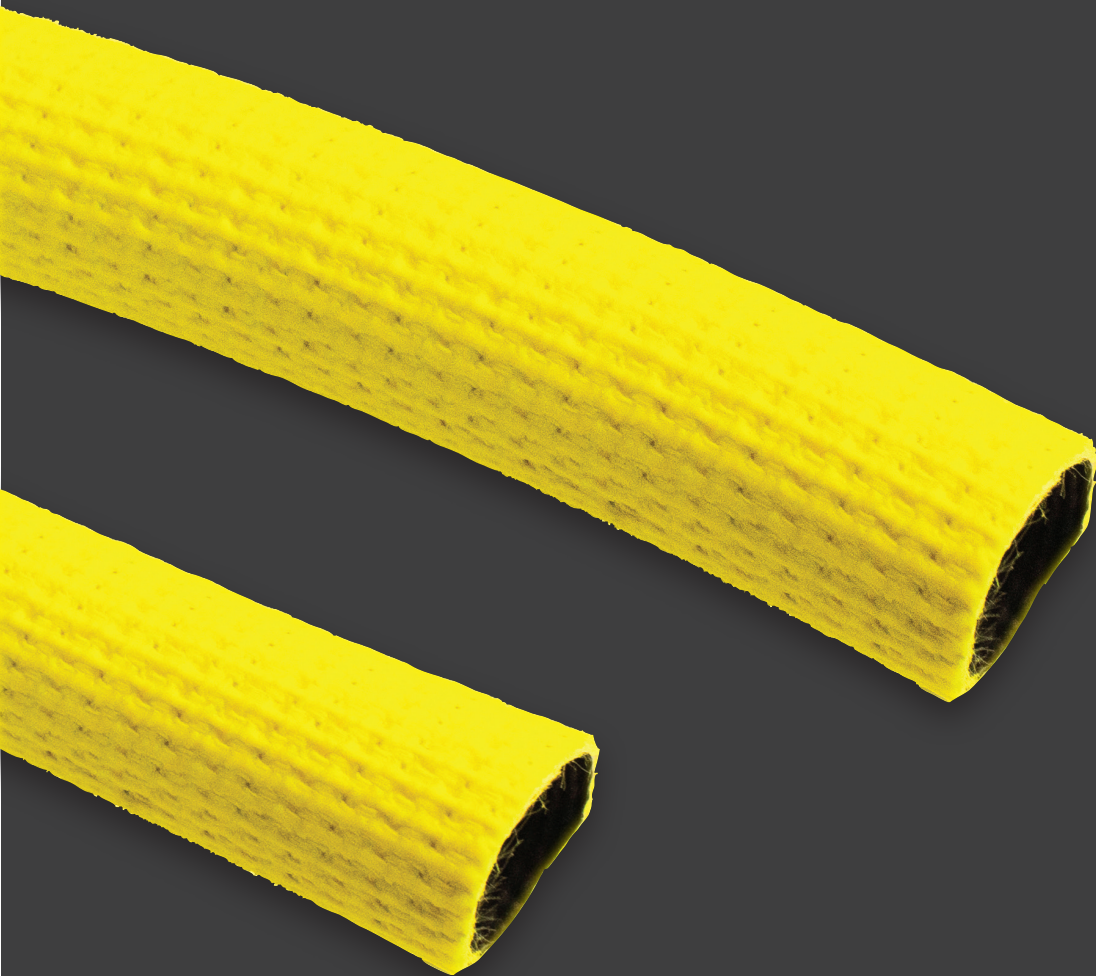


# FIRE HYDRANT HOSES

APPROVED ACCORDING TO EN-694

## ALWAYS THE RIGHT TYPE OF HOSE FOR THE DESIGNATED PURPOSE

When it comes to choosing a hose, there are a large number of options and different types of hoses that are suitable for different types of environments. We will help you find the right type according to your requirements, applicable directives and standards. Hoses are available in a variety of designs, lengths and colours. For example, there is a hose in signal yellow for environments where visibility is a priority. Whatever your field of activity there is a product that is right for you!



The signal yellow hose affords better visibility.



**STABILO® hose, black**  
 Made of reinforced polyester yarn. Internal gumming of ozone and UV resistant EPDM rubber. The hose can handle temperatures from -30°C up to 80°C.



**STABILO® hose, signal yellow**  
 Same features as the standard STABILO® hose but in this case in a signal yellow design for improved visibility.



**STABILO® hose, rubber-coated**  
 Same features as the standard STABILO® hose but with outer rubber coating for extra high wear resistance. Signal yellow for improved visibility.



**STABILO® hose, PVC-coated**  
 Same features as the standard STABILO® hose but with external PVC coating for high wear resistance.



**Base rubber hose**  
 The base rubber hose is made of PVC, nitrile rubber and polyester and has a smooth, black outer shell. Can handle temperatures from -20°C up to 60°C.

Type of hose	Maximum working pressure	Bursting pressure	Dimensions and weight
STABILO® hose	3.0 MPa	8.0 MPa	¾" = 0.12 kg/m 1" = 0.15 kg/m
STABILO® hose, rubber-coated	3.0 MPa	8.0 MPa	¾" = 0.15 kg/m 1" = 0.20 kg/m
STABILO® hose, PVC-coated	3.0 MPa	8.0 MPa	1" = 0.17 kg/m
Base rubber hose	1.2 MPa	4.2 MPa	¾" = 0.34 kg/m 1" = 0.47 kg/m

# Create value out of risk<sup>®</sup>

---



**Presto Brandsäkerhet AB**, Box 315, Värmbolsvägen 2, SE-641 23 Katrineholm, Sweden  
Exchange: +46 10 45 20 000 | E-mail: [info@presto.se](mailto:info@presto.se) | [www.presto.se](http://www.presto.se)



EN-22-13-20180613